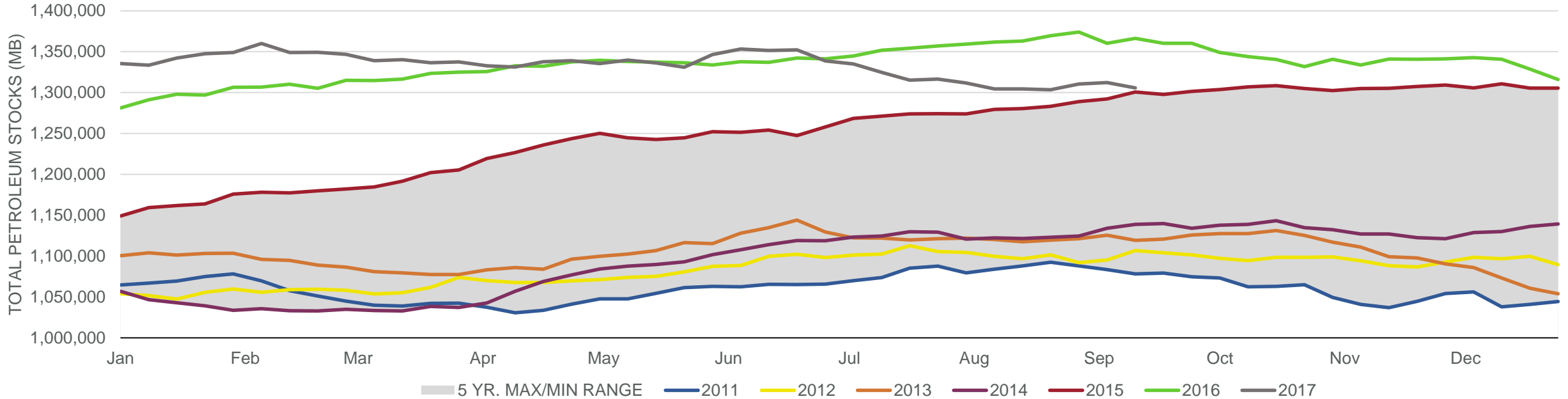
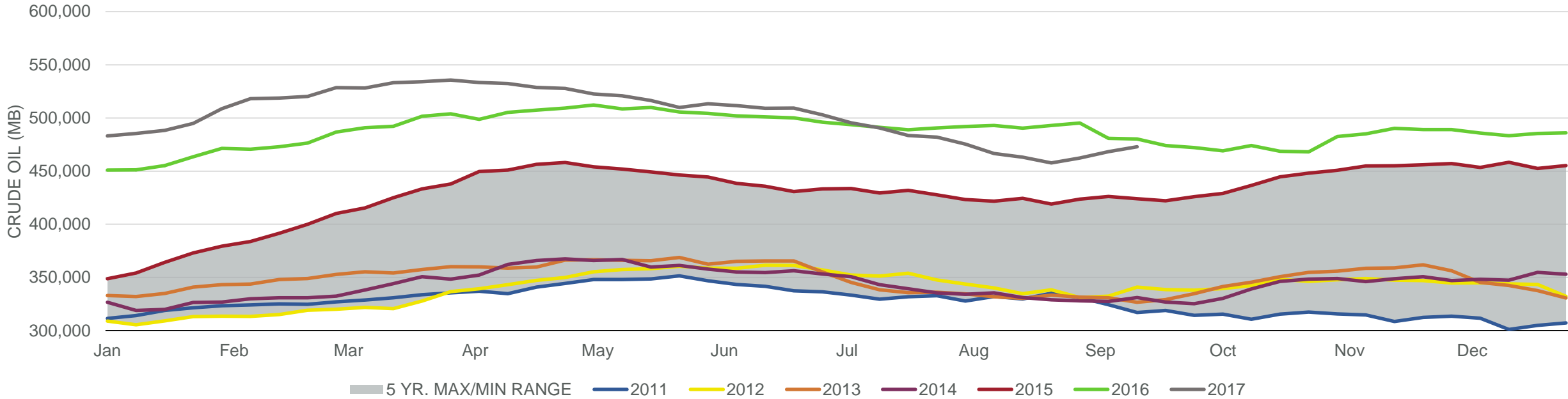


Total Petroleum Stocks



Week Ending	WTI	Change	GC Gaso	Change	NY No 2	Change	Crude	Change	Gasoline	Change	Distillate	Change	Kero	Change	Resid	Change	Total Stocks	Change
8/18/2017	\$47.52	(\$1.55)	\$1.56	(\$0.04)	\$1.49	(\$0.04)	463,165	(3,327)	229,902	(1,223)	148,415	28	40,190	807	34,412	1,065	1,304,490	37
8/25/2017	\$47.68	\$0.15	\$1.59	\$0.03	\$1.50	\$0.01	457,773	(5,392)	229,937	35	149,163	748	39,348	(842)	35,456	1,044	1,303,390	(1,100)
9/1/2017	\$46.68	(\$1.00)	\$1.80	\$0.21	\$1.54	\$0.05	462,353	4,580	226,738	(3,199)	147,767	(1,396)	39,134	(214)	34,643	(813)	1,310,418	7,028
9/8/2017	\$48.58	\$1.90	\$1.93	\$0.13	\$1.69	\$0.14	468,241	5,888	218,310	(8,428)	144,552	(3,215)	40,368	1,234	36,042	1,399	1,312,163	1,745
9/15/2017	\$49.07	\$0.49	\$1.76	(\$0.17)	\$1.67	(\$0.02)	472,832	4,591	216,185	(2,125)	138,859	(5,693)	40,374	6	37,060	1,018	1,305,605	(6,558)

Commercial Crude Oil Stocks



Week Ending	WTI	Change	Production	Change	Imports	Change	Exports	Change	Capacity	Inputs	Change	Utilization	Crude Oil Stocks	Change
8/18/2017	\$47.52	(\$1.55)	9,528	26	8,790	664	936	59	18,125	17,461	(104)	95.4%	463,165	(3,327)
8/25/2017	\$47.68	\$0.15	9,530	2	7,905	(885)	902	(34)	18,125	17,725	264	96.6%	457,773	(5,392)
9/1/2017	\$46.68	(\$1.00)	8,781	(749)	7,083	(822)	153	(749)	18,125	14,472	(3,253)	79.7%	462,353	4,580
9/8/2017	\$48.58	\$1.90	9,353	572	6,480	(603)	774	621	18,125	14,078	(394)	77.7%	468,241	5,888
9/15/2017	\$49.07	\$0.49	9,510	157	7,368	888	928	154	18,125	15,172	1,094	83.2%	472,832	4,591