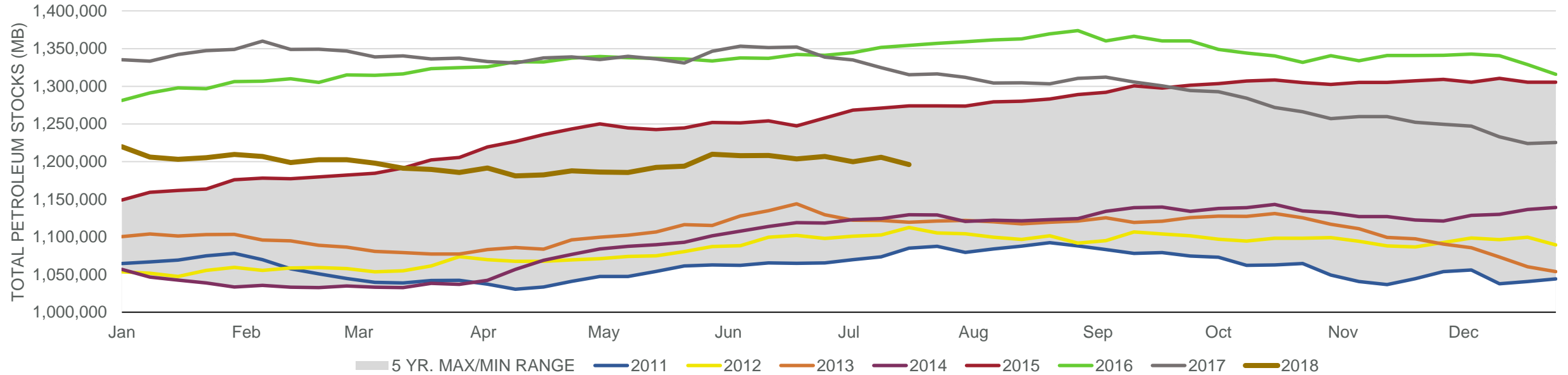


EIA Weekly Petroleum Status Report

Week Ending: 7/20/2018

Total Stocks: **-9,729 Mb** Crude Oil Stocks (excl. SPR): **-6,147 Mb** Production: **0 Mbd**

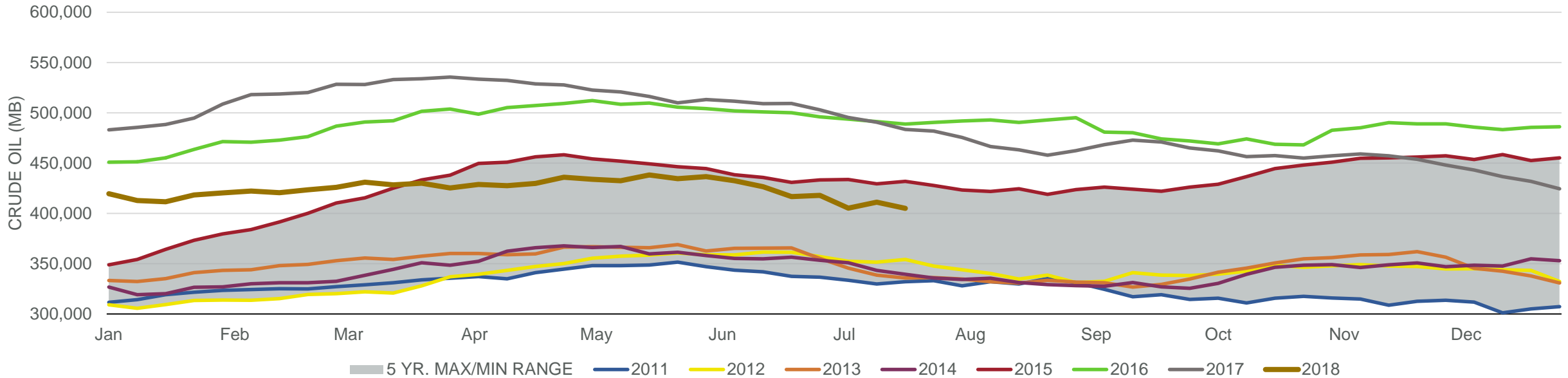
Total Petroleum Stocks



Week Ending	WTI	Change	GC Gaso	Change	NY No 2	Change	Crude	Change	Gaso	Change	Distillate	Change	Kero	Change	Resid	Change	Total Stocks	Change
6/22/2018	\$66.32	\$0.12	\$1.94	(\$0.07)	\$2.07	(\$0.06)	416,636	(9,891)	241,196	1,156	117,423	15	41,944	183	31,193	(430)	1,203,603	(4,560)
6/29/2018	\$74.03	\$7.70	\$2.01	\$0.06	\$2.11	\$0.04	417,881	1,245	239,691	(1,505)	117,557	134	40,965	(979)	29,646	(1,547)	1,206,904	3,301
7/6/2018	\$73.73	(\$0.30)	\$2.06	\$0.06	\$2.14	\$0.04	405,248	(12,633)	238,997	(694)	121,682	4,125	40,269	(696)	27,733	(1,913)	1,199,733	(7,171)
7/13/2018	\$71.96	(\$1.76)	\$2.06	(\$0.01)	\$2.13	(\$0.02)	411,084	5,836	235,832	(3,165)	121,311	(371)	40,768	499	28,076	343	1,205,736	6,003
7/20/2018	\$68.95	(\$3.01)	\$1.99	(\$0.07)	\$2.05	(\$0.08)	404,937	(6,147)	233,504	(2,328)	121,210	(101)	39,785	(983)	28,392	316	1,196,007	(9,729)

Total Stocks: **-9,729 Mb** Crude Oil Stocks (excl. SPR): **-6,147 Mb** Production: **0 Mbd**

Commercial Crude Oil Stocks



Week Ending	WTI	Change	Production	Change	Imports	Change	Exports	Change	Capacity	Inputs	Change	Utilization	Crude Oil Stocks	Change
6/22/2018	\$66.32	\$0.12	10,900	0	8,356	114	3000	626	18,125	17,816	115	97.5%	416,636	(9,891)
6/29/2018	\$74.03	\$7.70	10,900	0	9,055	699	2336	(664)	18,125	17,653	(163)	97.1%	417,881	1,245
7/6/2018	\$73.73	(\$0.30)	10,900	0	7,431	(1,624)	2027	(309)	18,125	17,652	(1)	96.7%	405,248	(12,633)
7/13/2018	\$71.96	(\$1.76)	11,000	100	9,066	1,635	1461	(566)	18,125	17,239	(413)	94.3%	411,084	5,836
7/20/2018	\$68.95	(\$3.01)	11,000	0	7,770	(1,296)	2683	1,222	18,125	17,285	46	93.8%	404,937	(6,147)