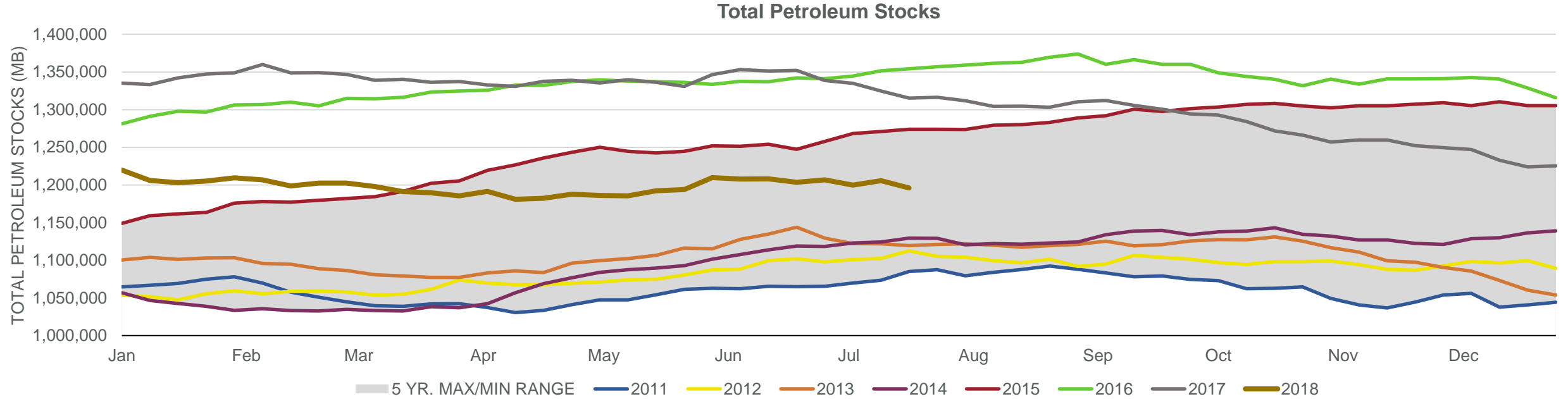


EIA Weekly Petroleum Status Report

Week Ending: 7/27/2018

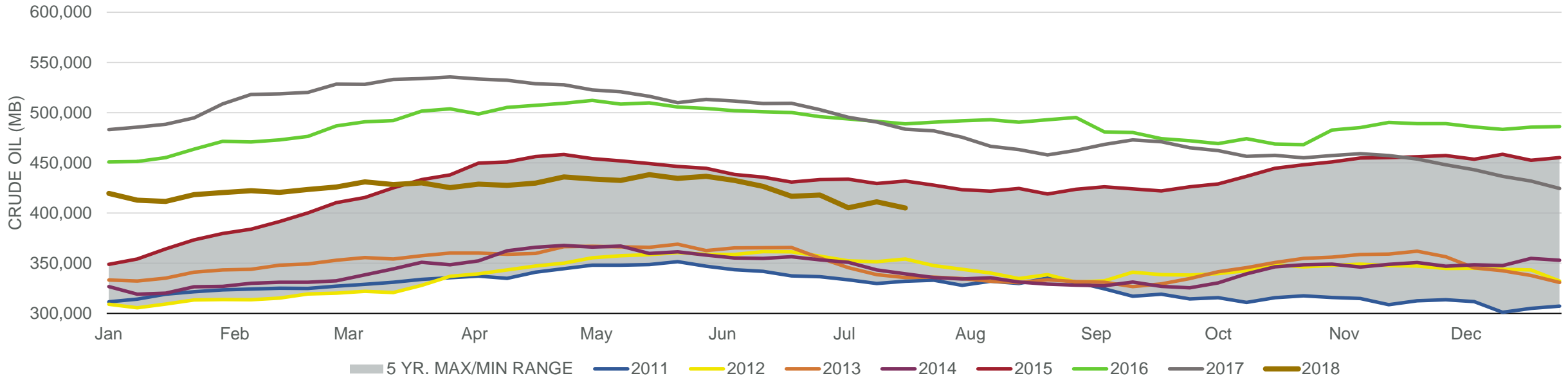
Total Stocks: **10,580 Mb** Crude Oil Stocks (excl. SPR): **3,803 Mb** Production: **-100 Mbd**



Week Ending	WTI	Change	GC Gaso	Change	NY No 2	Change	Crude	Change	Gaso	Change	Distillate	Change	Kero	Change	Resid	Change	Total Stocks	Change
6/29/2018	\$74.03	\$7.70	\$2.01	\$0.06	\$2.11	\$0.04	417,881	1,245	239,691	(1,505)	117,557	134	40,965	(979)	29,646	(1,547)	1,206,904	3,301
7/6/2018	\$73.73	(\$0.30)	\$2.06	\$0.06	\$2.14	\$0.04	405,248	(12,633)	238,997	(694)	121,682	4,125	40,269	(696)	27,733	(1,913)	1,199,733	(7,171)
7/13/2018	\$71.96	(\$1.76)	\$2.05	(\$0.01)	\$2.13	(\$0.02)	411,084	5,836	235,832	(3,165)	121,311	(371)	40,768	499	28,076	343	1,205,736	6,003
7/20/2018	\$68.95	(\$3.01)	\$1.99	(\$0.07)	\$2.05	(\$0.08)	404,937	(6,147)	233,504	(2,328)	121,210	(101)	39,785	(983)	28,392	316	1,196,007	(9,729)
7/27/2018	\$70.01	\$1.06	\$2.04	\$0.06	\$2.11	\$0.06	408,740	3,803	230,968	(2,536)	124,193	2,983	41,117	1,332	28,720	328	1,206,587	10,580

Total Stocks: **10,580 Mb** Crude Oil Stocks (excl. SPR): **3,803 Mb** Production: **-100 Mbd**

Commercial Crude Oil Stocks



Week Ending	WTI	Change	Production	Change	Imports	Change	Exports	Change	Capacity	Inputs	Change	Utilization	Crude Oil Stocks	Change
6/29/2018	\$74.03	\$7.70	10,900	0	9,055	699	2336	(664)	18,125	17,653	(163)	97.1%	417,881	1,245
7/6/2018	\$73.73	(\$0.30)	10,900	0	7,431	(1,624)	2027	(309)	18,125	17,652	(1)	96.7%	405,248	(12,633)
7/13/2018	\$71.96	(\$1.76)	11,000	100	9,066	1,635	1461	(566)	18,125	17,239	(413)	94.3%	411,084	5,836
7/20/2018	\$68.95	(\$3.01)	11,000	0	7,770	(1,296)	2683	1,222	18,125	17,285	46	93.8%	404,937	(6,147)
7/27/2018	\$70.01	\$1.06	10,900	(100)	7,749	(21)	1310	(1,373)	18,125	17,480	195	96.1%	408,740	3,803