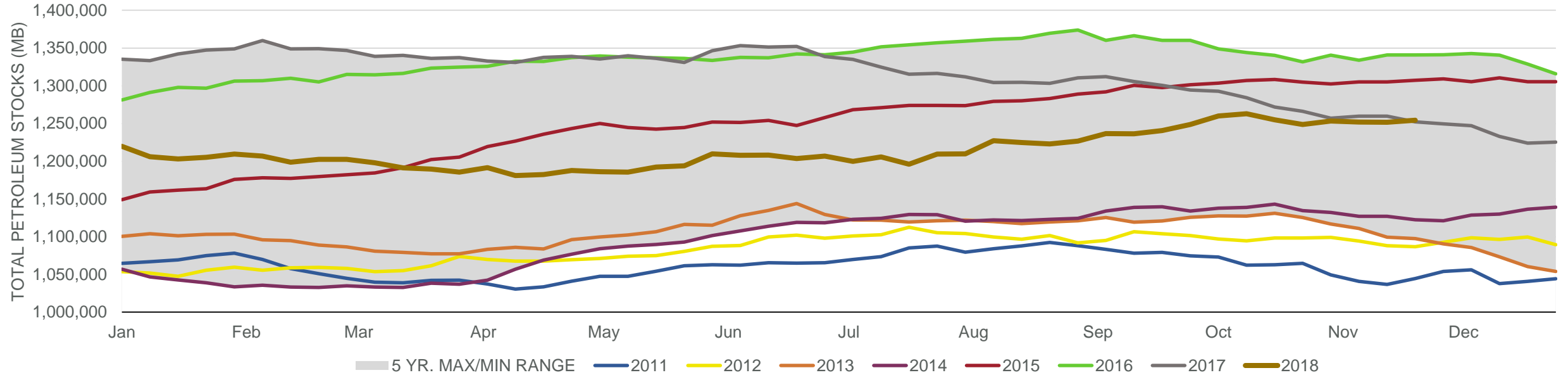


## EIA Weekly Petroleum Status Report

Week Ending: 11/23/2018

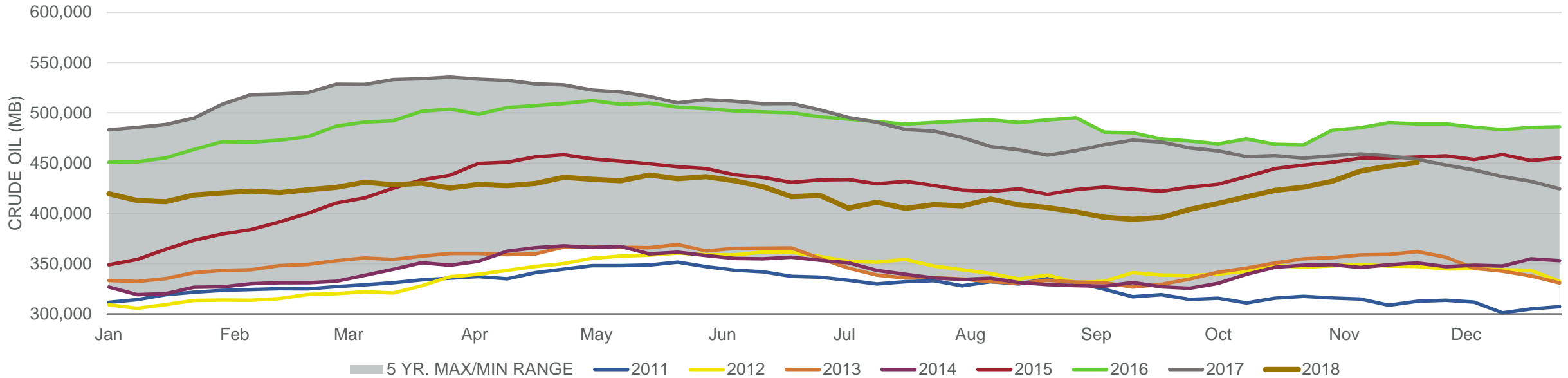
Total Stocks: **2,434 Mbd** Crude Oil Stocks (excl. SPR): **3,577 Mbd** Production: **0 Mbd**

### Total Petroleum Stocks



Week Ending	WTI	Change	GC Gaso	Change	NY No 2	Change	Crude	Change	Gaso	Change	Distillate	Change	Kero	Change	Resid	Change	Total Stocks	Change
10/26/2018	\$67.43	(\$2.81)	\$1.86	(\$0.10)	\$2.27	(\$0.04)	426,004	3,217	226,169	(3,161)	126,322	(4,054)	42,846	(1,050)	28,669	(574)	1,248,595	(6,395)
11/2/2018	\$65.06	(\$2.37)	\$1.81	(\$0.05)	\$2.26	(\$0.01)	431,787	5,783	228,021	1,852	122,857	(3,465)	42,309	(537)	29,710	1,041	1,253,429	4,834
11/9/2018	\$61.57	(\$3.48)	\$1.69	(\$0.12)	\$2.18	(\$0.08)	442,057	10,270	226,610	(1,411)	119,268	(3,589)	39,958	(2,351)	27,893	(1,817)	1,252,023	(1,406)
11/16/2018	\$56.92	(\$4.66)	\$1.60	(\$0.09)	\$2.11	(\$0.07)	446,908	4,851	225,315	(1,295)	119,191	(77)	39,432	(526)	28,478	585	1,251,803	(220)
11/23/2018	\$54.99	(\$1.93)	\$1.52	(\$0.08)	\$2.03	(\$0.08)	450,485	3,577	224,551	(764)	121,801	2,610	39,710	278	28,682	204	1,254,237	2,434

## Commercial Crude Oil Stocks



Week Ending	WTI	Change	Production	Change	Imports	Change	Exports	Change	Capacity	Inputs	Change	Utilization	Crude Oil Stocks	Change
10/26/2018	\$67.43	(\$2.81)	11,200	300	7,344	(334)	2485	305	18,125	16,417	149	89.4%	426,004	3,217
11/2/2018	\$65.06	(\$2.37)	11,600	400	7,539	195	2405	(80)	18,125	16,408	(9)	90.0%	431,787	5,783
11/9/2018	\$61.57	(\$3.48)	11,700	100	7,452	(87)	2050	(355)	18,125	16,432	24	90.1%	442,057	10,270
11/16/2018	\$56.92	(\$4.66)	11,700	0	7,554	102	1969	(81)	18,125	16,855	423	92.7%	446,908	4,851
11/23/2018	\$54.99	(\$1.93)	11,700	0	8,162	608	2442	473	18,125	17,553	698	95.6%	450,485	3,577