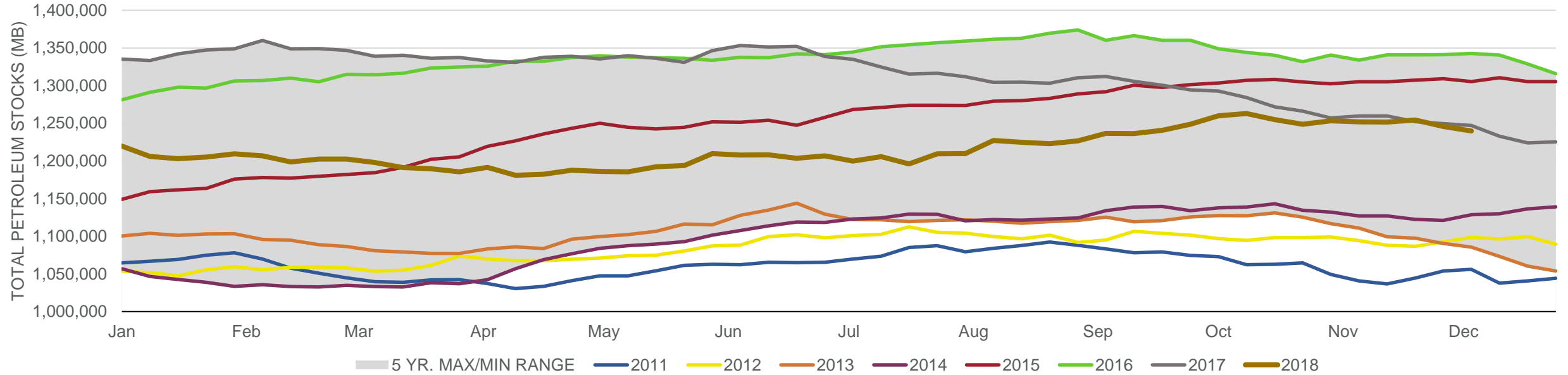


EIA Weekly Petroleum Status Report

Week Ending: 12/07/2018

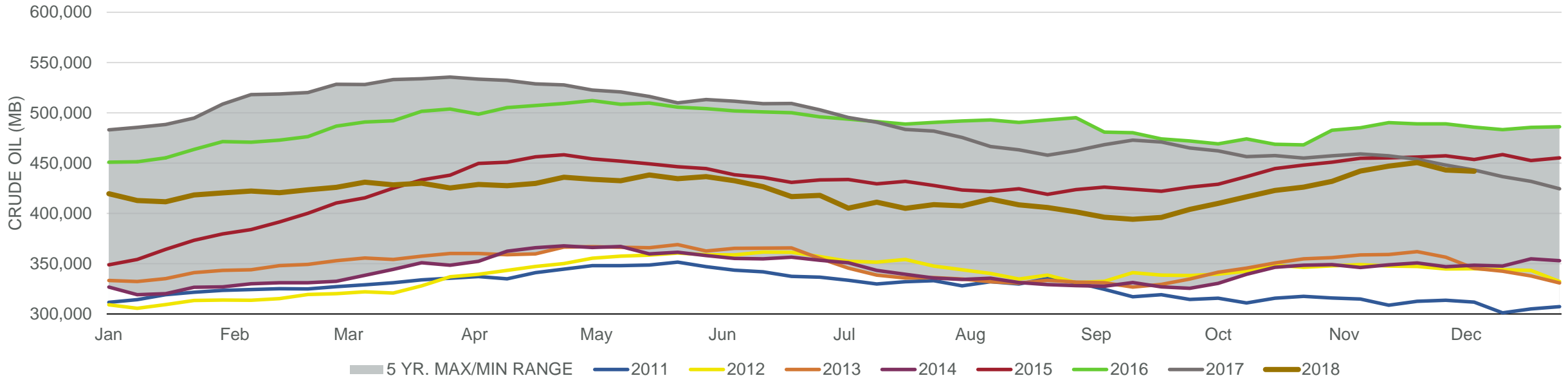
Total Stocks: **-5,983 Mbd** Crude Oil Stocks (excl. SPR): **-1,208 Mbd** Production: **-100 Mbd**

Total Petroleum Stocks



Week Ending	WTI	Change	GC Gaso	Change	NY No 2	Change	Crude	Change	Gasoline	Change	Distillate	Change	Kero	Change	Resid	Change	Total Stocks	Change
11/9/2018	\$61.57	(\$3.48)	\$1.69	(\$0.12)	\$2.18	(\$0.08)	442,057	10,270	226,610	(1,411)	119,268	(3,589)	39,958	(2,351)	27,893	(1,817)	1,252,023	(1,406)
11/16/2018	\$56.92	(\$4.66)	\$1.57	(\$0.12)	\$2.11	(\$0.07)	446,908	4,851	225,315	(1,295)	119,191	(77)	39,432	(526)	28,478	585	1,251,803	(220)
11/23/2018	\$54.99	(\$1.93)	\$1.51	(\$0.06)	\$2.03	(\$0.08)	450,485	3,577	224,551	(764)	121,801	2,610	39,710	278	28,682	204	1,254,237	2,434
11/30/2018	\$51.01	(\$3.97)	\$1.44	(\$0.08)	\$1.84	(\$0.18)	443,162	(7,323)	226,250	1,699	125,612	3,811	38,116	(1,594)	28,634	(48)	1,245,888	(8,349)
12/7/2018	\$52.63	\$1.61	\$1.44	\$0.00	\$1.87	\$0.03	441,954	(1,208)	228,337	2,087	124,137	(1,475)	39,002	886	28,233	(401)	1,239,905	(5,983)

Commercial Crude Oil Stocks



Week Ending	WTI	Change	Production	Change	Imports	Change	Exports	Change	Capacity	Inputs	Change	Utilization	Crude Oil Stocks	Change
11/9/2018	\$61.57	(\$3.48)	11,700	100	7,452	(87)	2050	(355)	18,125	16,432	24	90.1%	442,057	10,270
11/16/2018	\$56.92	(\$4.66)	11,700	0	7,554	102	1969	(81)	18,125	16,855	423	92.7%	446,908	4,851
11/23/2018	\$54.99	(\$1.93)	11,700	0	8,162	608	2442	473	18,125	17,553	698	95.6%	450,485	3,577
11/30/2018	\$51.01	(\$3.97)	11,700	0	7,219	(943)	3203	761	18,125	17,487	(66)	95.5%	443,162	(7,323)
12/7/2018	\$52.63	\$1.61	11,600	(100)	7,393	174	2274	(929)	18,125	17,436	(51)	95.1%	441,954	(1,208)