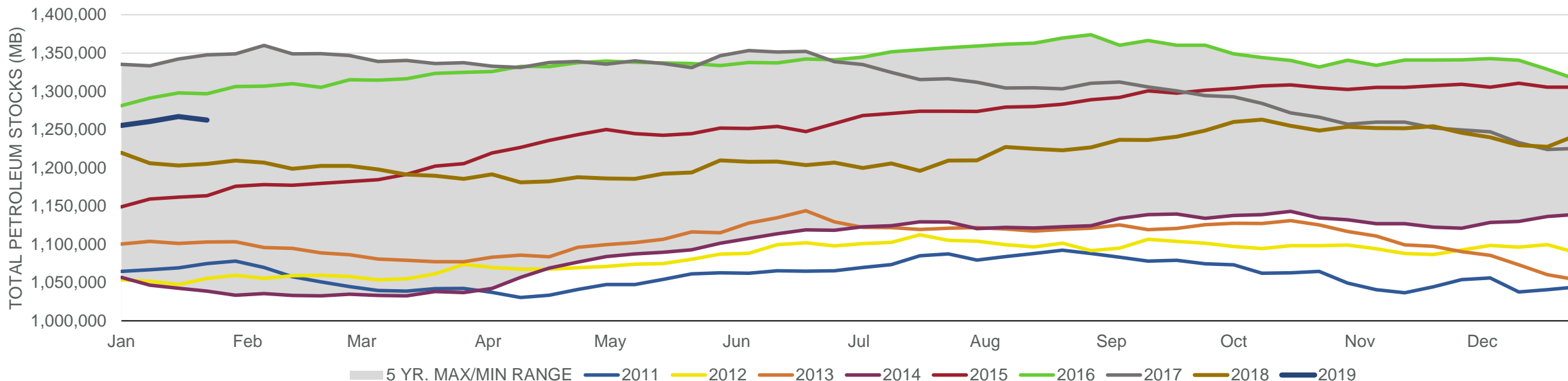


# EIA Weekly Petroleum Status Report

Week Ending: 01/25/2019

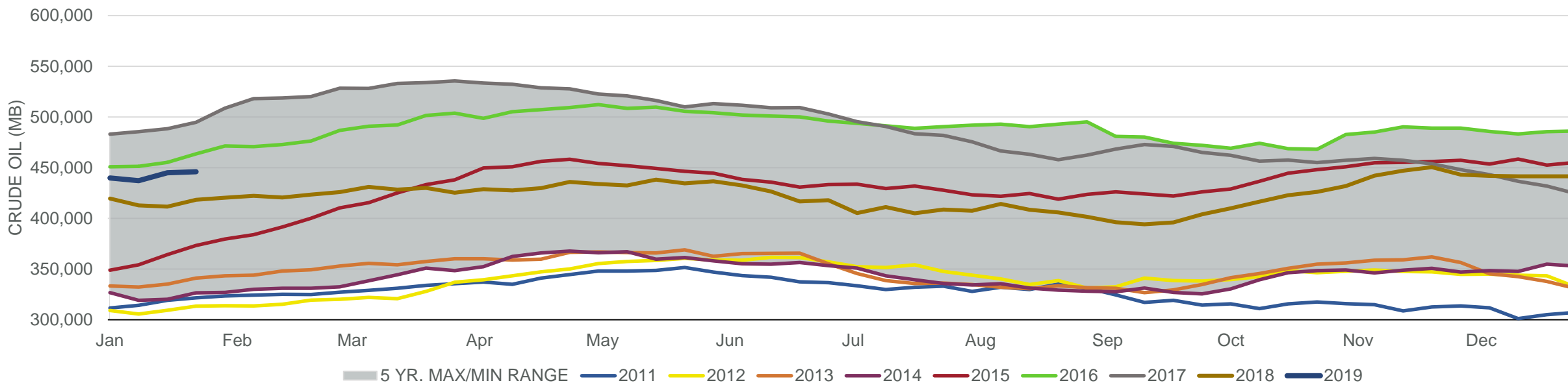
Total Stocks: **-4,773 Mbd** Crude Oil Stocks (excl. SPR): **919 Mbd** Production: **0 Mbd**

### Total Petroleum Stocks



Week Ending	WTI	Change	GC Gaso	Change	NY No 2	Change	Crude	Change	Gasoline	Change	Distillate	Change	Kero	Change	Resid	Change	Total Stocks	Change
12/28/2018	\$46.23	(\$5.06)	\$1.31	(\$0.10)	\$1.76	(\$0.09)	441,418	7	239,996	6,890	129,431	9,529	40,712	262	27,883	1,013	1,242,161	14,620
1/4/2019	\$46.12	(\$0.10)	\$1.29	(\$0.02)	\$1.69	(\$0.06)	439,738	(1,680)	248,062	8,066	140,042	10,611	40,510	(202)	28,264	381	1,255,443	13,282
1/11/2019	\$50.78	\$4.66	\$1.33	\$0.04	\$1.80	\$0.11	437,055	(2,683)	255,565	7,503	143,009	2,967	40,552	42	28,294	30	1,260,415	4,972
1/18/2019	\$51.92	\$1.14	\$1.36	\$0.03	\$1.85	\$0.04	445,025	7,970	259,615	4,050	142,392	(617)	41,174	622	29,469	1,175	1,267,110	6,695
1/25/2019	\$52.88	\$0.95	\$1.39	\$0.03	\$1.86	\$0.02	445,944	919	257,380	(2,235)	141,270	(1,122)	41,842	668	28,599	(870)	1,262,337	(4,773)

## Commercial Crude Oil Stocks



Week Ending	WTI	Change	Production	Change	Imports	Change	Exports	Change	Capacity	Inputs	Change	Utilization	Crude Oil Stocks	Change
12/28/2018	\$46.23	(\$5.06)	11,700	0	7,392	(264)	2237	(732)	18,125	17,760	410	97.2%	441,418	7
1/4/2019	\$46.12	(\$0.10)	11,700	0	7,846	454	2065	(172)	18,125	17,566	(194)	96.1%	439,738	(1,680)
1/11/2019	\$50.78	\$4.66	11,900	200	7,527	(319)	2966	901	18,125	17,223	(343)	94.6%	437,055	(2,683)
1/18/2019	\$51.92	\$1.14	11,900	0	8,191	664	2035	(931)	18,125	17,049	(174)	92.9%	445,025	7,970
1/25/2019	\$52.88	\$0.95	11,900	0	7,083	(1,108)	1944	(91)	18,125	16,463	(586)	90.1%	445,944	919