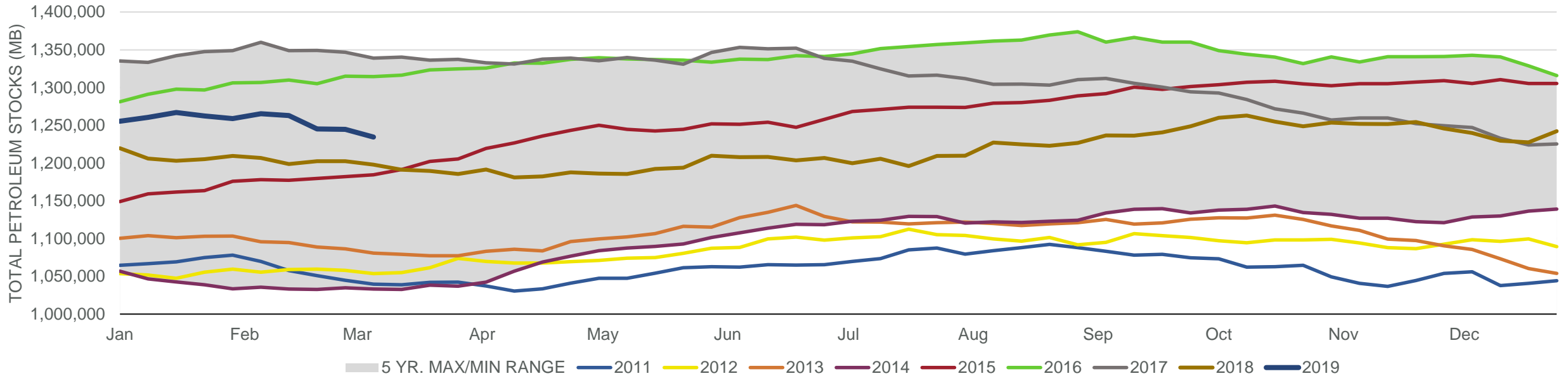


EIA Weekly Petroleum Status Report

Week Ending: 03/08/2019

Total Stocks: **-10,212 Mb** Crude Oil Stocks (excl. SPR): **-3,862 Mb** Production: **-100 Mbd**

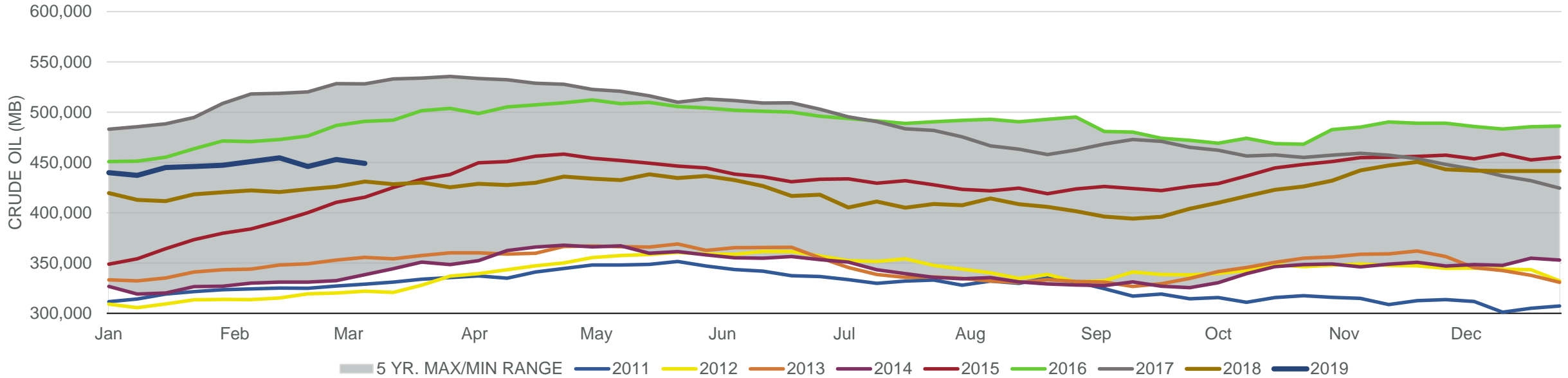
Total Petroleum Stocks



Week Ending	WTI	Change	GC Gaso	Change	NY No 2	Change	Crude	Change	Gasol	Change	Distillate	Change	Kero	Change	Resid	Change	Total Stocks	Change
2/8/2019	\$53.53	(\$0.11)	\$1.43	\$0.07	\$1.87	\$0.02	450,840	3,633	258,301	408	140,200	1,187	42,113	564	30,305	1,509	1,265,512	6,532
2/15/2019	\$53.88	\$0.35	\$1.50	\$0.07	\$1.91	\$0.04	454,512	3,672	256,847	(1,454)	138,683	(1,517)	43,365	1,252	29,411	(894)	1,263,026	(2,486)
2/22/2019	\$56.75	\$2.87	\$1.51	\$0.01	\$1.98	\$0.07	445,865	(8,647)	254,941	(1,906)	138,379	(304)	42,878	(487)	28,098	(1,313)	1,245,153	(17,873)
3/1/2019	\$56.12	(\$0.62)	\$1.45	(\$0.05)	\$1.97	(\$0.01)	452,934	7,069	250,714	(4,227)	135,986	(2,393)	42,024	(854)	28,046	(52)	1,244,705	(448)
3/8/2019	\$56.35	\$0.23	\$1.68	\$0.23	\$1.98	\$0.01	449,072	(3,862)	246,090	(4,624)	136,369	383	41,088	(936)	27,590	(456)	1,234,493	(10,212)

Total Stocks: **-10,212 Mb** Crude Oil Stocks (excl. SPR): **-3,862 Mb** Production: **-100 Mbd**

Commercial Crude Oil Stocks



Week Ending	WTI	Change	Production	Change	Imports	Change	Exports	Change	Capacity	Inputs	Change	Utilization	Crude Oil Stocks	Change
2/8/2019	\$53.53	(\$0.11)	11,900	0	6,210	(936)	2364	(506)	18,125	15,768	(865)	85.9%	450,840	3,633
2/15/2019	\$53.88	\$0.35	12,000	100	7,522	1,312	3607	1,243	18,125	15,711	(57)	85.9%	454,512	3,672
2/22/2019	\$56.75	\$2.87	12,100	100	5,917	(1,605)	3359	(248)	18,125	15,890	179	87.1%	445,865	(8,647)
3/1/2019	\$56.12	(\$0.62)	12,100	0	7,001	1,084	2803	(556)	18,125	15,990	100	87.5%	452,934	7,069
3/8/2019	\$56.35	\$0.23	12,000	(100)	6,746	(255)	2546	(257)	18,125	16,020	30	87.6%	449,072	(3,862)