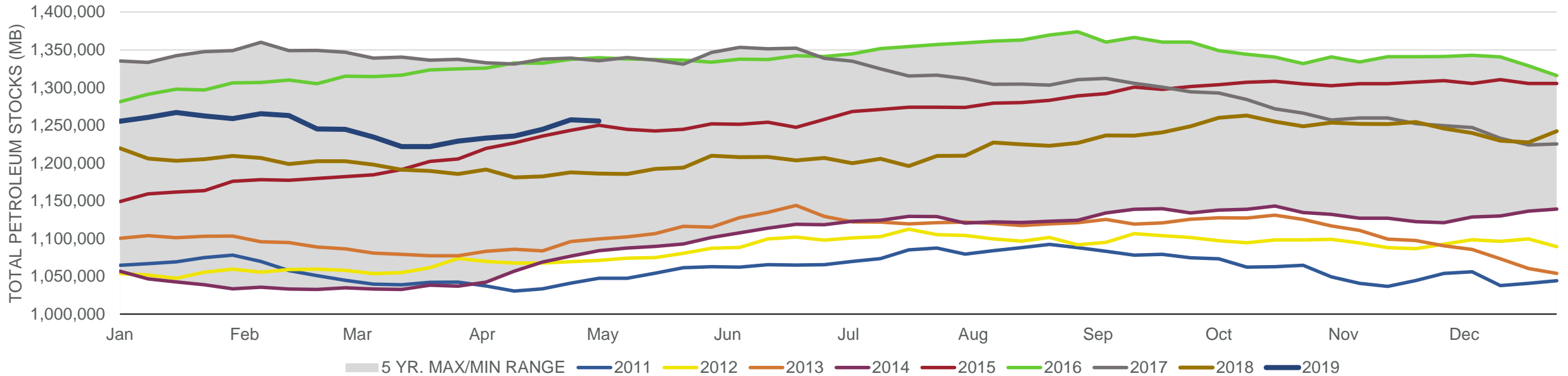


# EIA Weekly Petroleum Status Report

Week Ending: 05/03/2019

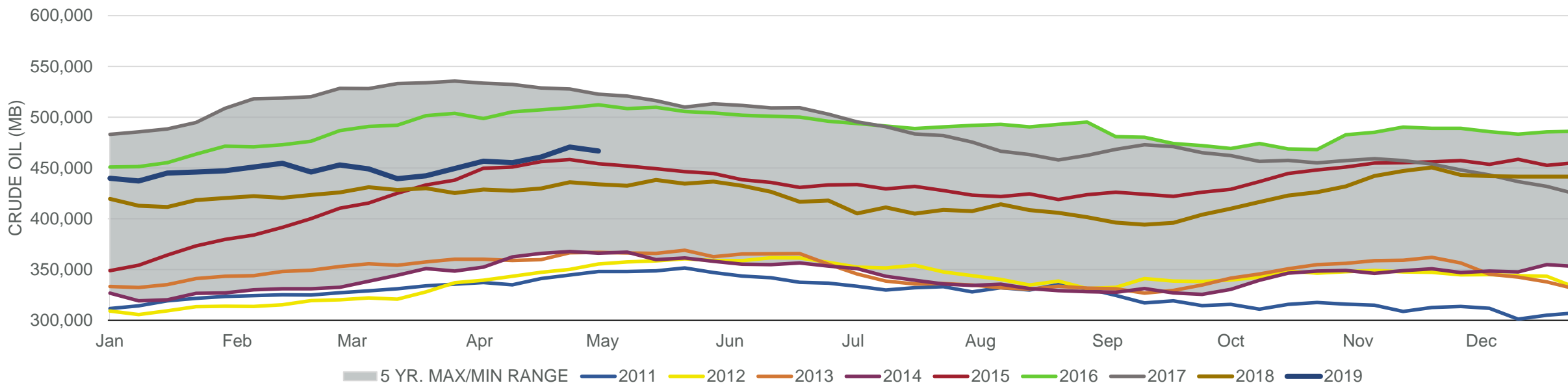
Total Stocks: **1,707 Mb** Crude Oil Stocks (excl. SPR): **3,963 Mb** Production: **-100 Mbd**

Total Petroleum Stocks



Week Ending	WTI	Change	GC Gaso	Change	NY No 2	Change	Crude	Change	Gasoline	Change	Distillate	Change	Kero	Change	Resid	Change	Total Stocks	Change
4/5/2019	\$61.78	\$2.55	\$1.91	(\$0.01)	\$1.98	\$0.02	456,550	7,029	229,129	(7,710)	128,053	(116)	41,915	1,600	29,270	(135)	1,233,264	4,136
4/12/2019	\$63.95	\$2.17	\$2.00	\$0.09	\$2.03	\$0.06	455,154	(1,396)	227,955	(1,174)	127,691	(362)	42,366	451	29,076	(194)	1,235,778	2,514
4/19/2019	\$63.81	(\$0.14)	\$2.00	\$0.00	\$2.05	\$0.01	460,633	5,479	225,826	(2,129)	127,029	(662)	42,215	(151)	30,243	1,167	1,244,598	8,820
4/26/2019	\$65.28	\$1.46	\$2.07	\$0.07	\$2.07	\$0.02	470,567	9,934	226,743	917	125,722	(1,307)	40,919	(1,296)	29,847	(396)	1,257,328	12,730
5/3/2019	\$62.90	(\$2.38)	\$2.01	(\$0.06)	\$2.05	(\$0.02)	466,604	(3,963)	226,147	(596)	125,563	(159)	39,720	(1,199)	27,953	(1,894)	1,255,621	(1,707)

## Commercial Crude Oil Stocks



Week Ending	WTI	Change	Production	Change	Imports	Change	Exports	Change	Capacity	Inputs	Change	Utilization	Crude Oil Stocks	Change
4/5/2019	\$61.78	\$2.55	12,200	0	6,599	(164)	2349	(374)	18,125	16,100	251	87.5%	456,550	7,029
4/12/2019	\$63.95	\$2.17	12,100	(100)	5,992	(607)	2401	52	18,125	16,078	(22)	87.7%	455,154	(1,396)
4/19/2019	\$63.81	(\$0.14)	12,200	100	7,149	1,157	2681	280	18,125	16,583	505	90.1%	460,633	5,479
4/26/2019	\$65.28	\$1.46	12,300	100	7,414	265	2611	(70)	18,125	16,446	(137)	89.2%	470,567	9,934
5/3/2019	\$62.90	(\$2.38)	12,200	(100)	6,693	(721)	2322	(289)	18,125	16,405	(41)	88.9%	466,604	(3,963)