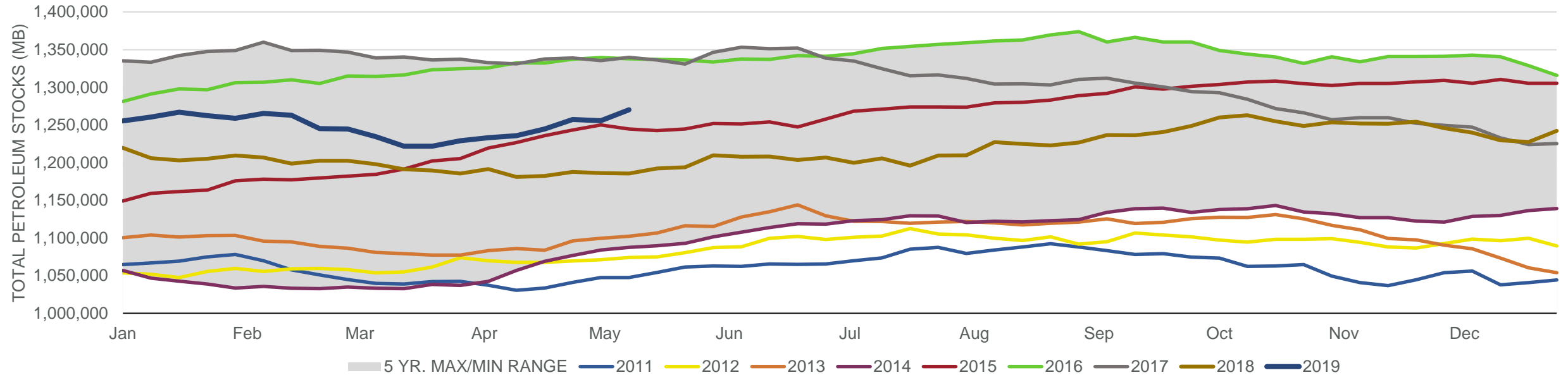


EIA Weekly Petroleum Status Report

Week Ending: 05/10/2019

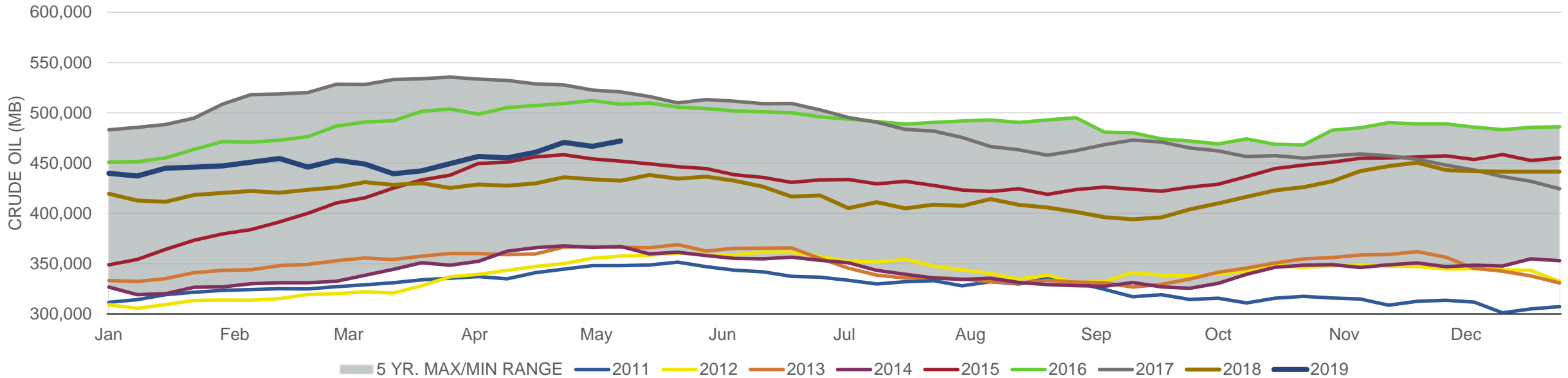
Total Stocks: **14,642 Mb** Crude Oil Stocks (excl. SPR): **5,431 Mb** Production: **-100 Mbd**

Total Petroleum Stocks



Week Ending	WTI	Change	GC Gaso	Change	NY No 2	Change	Crude	Change	Gasoline	Change	Distillate	Change	Kero	Change	Resid	Change	Total Stocks	Change
4/12/2019	\$63.95	\$2.17	\$2.00	\$0.09	\$2.03	\$0.06	455,154	(1,396)	227,955	(1,174)	127,691	(362)	42,366	451	29,076	(194)	1,235,778	2,514
4/19/2019	\$63.81	(\$0.14)	\$2.00	\$0.00	\$2.05	\$0.01	460,633	5,479	225,826	(2,129)	127,029	(662)	42,215	(151)	30,243	1,167	1,244,598	8,820
4/26/2019	\$65.28	\$1.46	\$2.07	\$0.07	\$2.07	\$0.02	470,567	9,934	226,743	917	125,722	(1,307)	40,919	(1,296)	29,847	(396)	1,257,328	12,730
5/3/2019	\$62.90	(\$2.38)	\$2.01	(\$0.06)	\$2.05	(\$0.02)	466,604	(3,963)	226,147	(596)	125,563	(159)	39,720	(1,199)	27,953	(1,894)	1,255,621	(1,707)
5/10/2019	\$61.81	(\$1.09)	\$1.89	(\$0.12)	\$2.03	(\$0.02)	472,035	5,431	225,024	(1,123)	125,647	84	40,220	500	29,588	1,635	1,270,263	14,642

Commercial Crude Oil Stocks



Week Ending	WTI	Change	Production	Change	Imports	Change	Exports	Change	Capacity	Inputs	Change	Utilization	Crude Oil Stocks	Change
4/12/2019	\$63.95	\$2.17	12,100	(100)	5,992	(607)	2401	52	18,125	16,078	(22)	87.7%	455,154	(1,396)
4/19/2019	\$63.81	(\$0.14)	12,200	100	7,149	1,157	2681	280	18,125	16,583	505	90.1%	460,633	5,479
4/26/2019	\$65.28	\$1.46	12,300	100	7,414	265	2611	(70)	18,125	16,446	(137)	89.2%	470,567	9,934
5/3/2019	\$62.90	(\$2.38)	12,200	(100)	6,693	(721)	2322	(289)	18,125	16,405	(41)	88.9%	466,604	(3,963)
5/10/2019	\$61.81	(\$1.09)	12,100	(100)	7,612	919	3347	1,025	18,125	16,676	271	90.5%	472,035	5,431