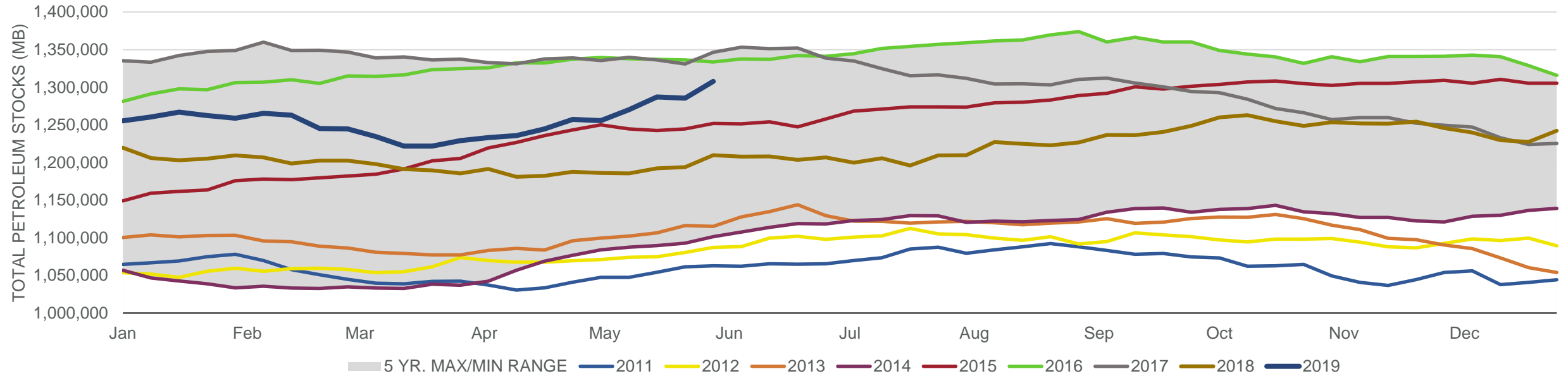


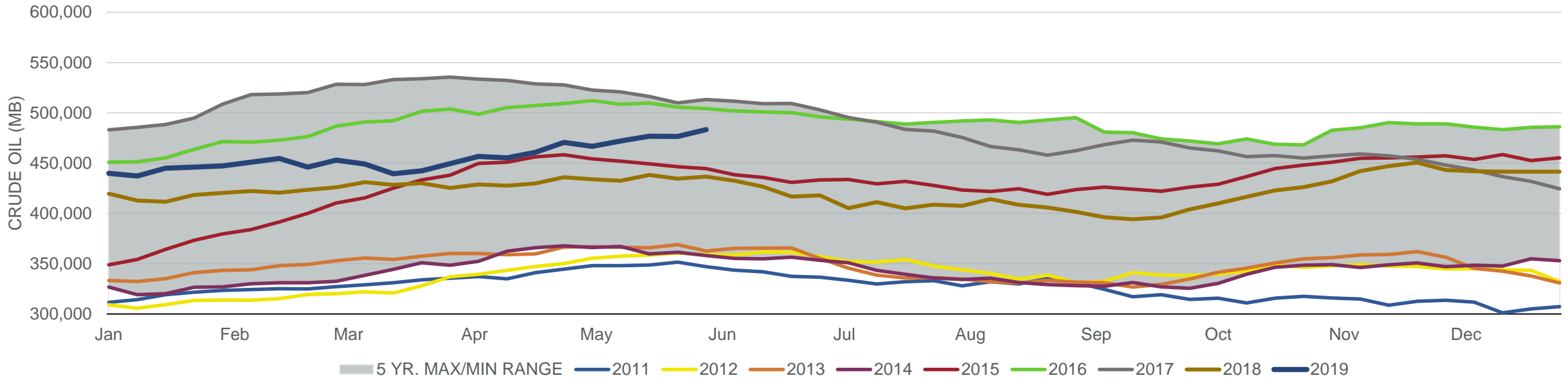
Total Stocks: **22,440 Mb** Crude Oil Stocks (excl. SPR): **6,771 Mb** Production: **100 Mbd**

Total Petroleum Stocks



Week Ending	WTI	Change	GC Gaso	Change	NY No 2	Change	Crude	Change	Gasoline	Change	Distillate	Change	Kero	Change	Resid	Change	Total Stocks	Change
5/3/2019	\$63.16	(\$2.26)	\$2.01	(\$0.06)	\$2.04	(\$0.03)	466,604	(3,963)	226,147	(596)	125,563	(159)	39,720	(1,199)	27,953	(1,894)	1,255,621	(1,707)
5/10/2019	\$61.88	(\$1.28)	\$1.89	(\$0.12)	\$2.03	(\$0.01)	472,035	5,431	225,024	(1,123)	125,647	84	40,220	500	29,588	1,635	1,270,263	14,642
5/17/2019	\$61.88	\$0.00	\$1.89	(\$0.00)	\$2.05	\$0.01	476,775	4,740	228,740	3,716	126,415	768	40,823	603	29,067	(521)	1,287,056	16,793
5/24/2019	\$61.60	(\$0.28)	\$1.90	\$0.01	\$2.03	(\$0.02)	476,493	(282)	230,944	2,204	124,800	(1,615)	38,376	(2,447)	28,301	(766)	1,285,486	(1,570)
5/31/2019	\$57.22	(\$4.37)	\$1.85	(\$0.05)	\$1.91	(\$0.11)	483,264	6,771	234,149	3,205	129,372	4,572	38,742	366	28,793	492	1,307,926	22,440

Commercial Crude Oil Stocks



Week Ending	WTI	Change	Production	Change	Imports	Change	Exports	Change	Capacity	Inputs	Change	Utilization	Crude Oil Stocks	Change
5/3/2019	\$63.16	(\$2.26)	12,200	(100)	6,693	(721)	2322	(289)	18,125	16,405	(41)	88.9%	466,604	(3,963)
5/10/2019	\$61.88	(\$1.28)	12,100	(100)	7,612	919	3347	1,025	18,125	16,676	271	90.5%	472,035	5,431
5/17/2019	\$61.88	\$0.00	12,200	100	6,943	(669)	2922	(425)	18,125	16,578	(98)	89.9%	476,775	4,740
5/24/2019	\$61.60	(\$0.28)	12,300	100	6,862	(81)	3317	395	18,125	16,767	189	91.2%	476,493	(282)
5/31/2019	\$57.22	(\$4.37)	12,400	100	7,927	1,065	3298	(19)	18,125	16,938	171	91.8%	483,264	6,771